



# EPL1531

## Electric Pallet Truck 1.5T

- Improved new plug-in&out Li-Ion battery;
- Smart lithium battery;
- Newly designed handle head;
- Pass market tests of safety and reliability.

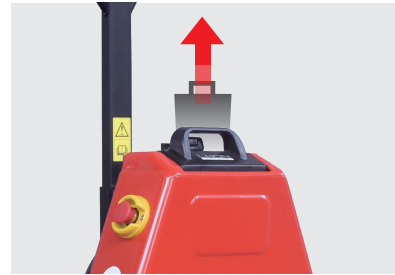
**EP EQUIPMENT CO.,LTD**  
[www.ep-ep.com](http://www.ep-ep.com)



## FEATURE

### ■ Improved new plug-in&out Li-Ion battery

Improved new plug-in&out Li-Ion battery to replace the old one.



### ■ Smart Lithium Battery

EPL1531 features a 24V/20Ah li-ion plug&play battery and an external battery as standard to cope with different working shifts need.



### ■ Newly Designed Handle Head

It is lifted by electricity and lowered manually, there is no need to worry about damaging goods by uncontrollable lowering.



### ■ Pass Market Tests Of Safety And Reliability

It has 10-year market-tested components.



### ■ Standard

### ■ Option (with caster wheels)

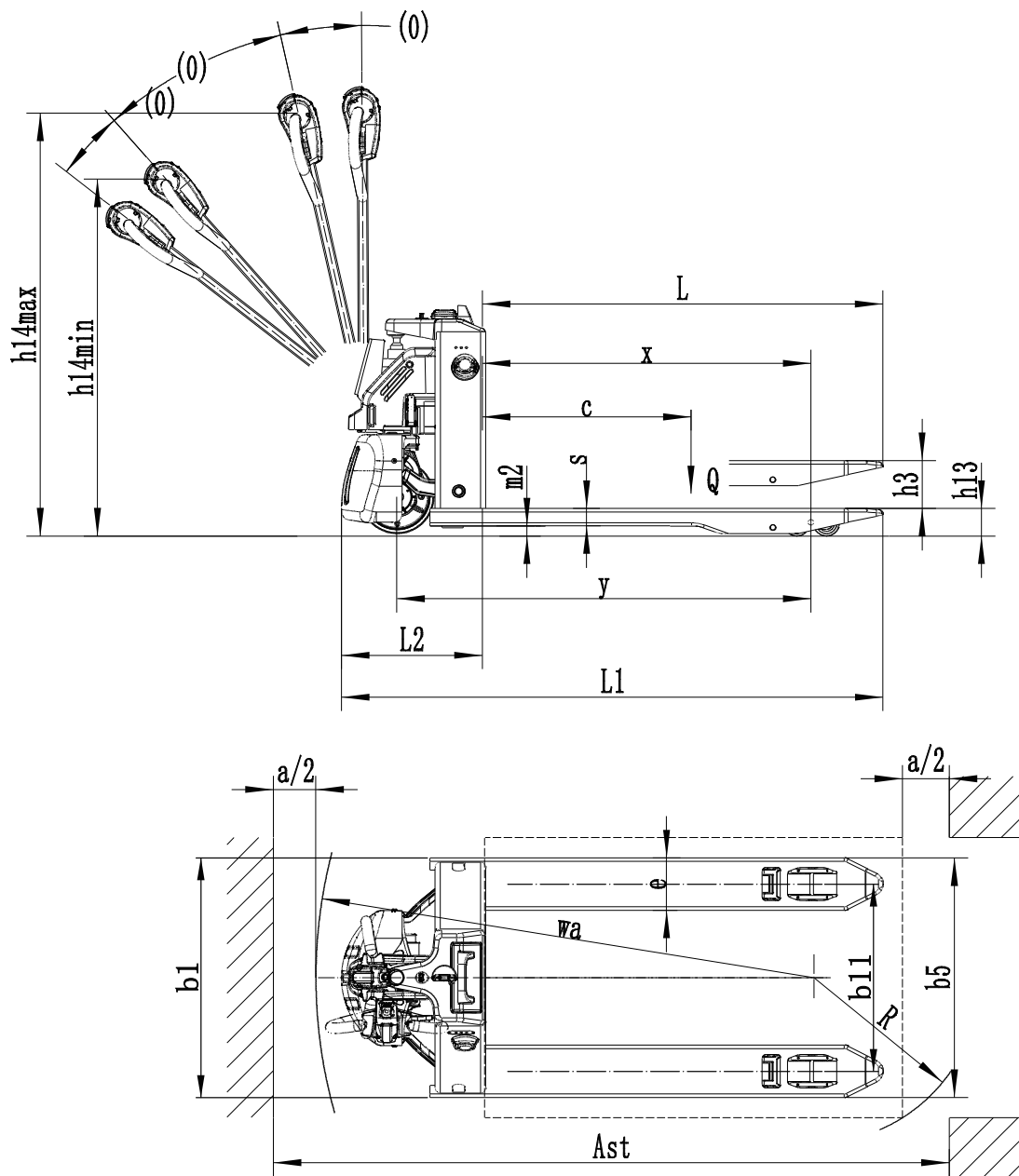


# Electric Pallet Truck 1.5T

## EPL1531

|                     |                |   |                       |       |                 |
|---------------------|----------------|---|-----------------------|-------|-----------------|
| Distinguishing mark | 1.1            | Manufacturer  |                       |       | EP              |
|                     | 1.2            | Model designation                                   |                       |       | EPL1531         |
|                     | 1.3            | Drive   |                       |       | Electric        |
|                     | 1.4            | Operator type                                       |                       |       | Pedestrian      |
|                     | 1.5            | Load capacity                                       | Q                     | kg    | 1500            |
|                     | 1.6            | Load center distance                                | c                     | mm    | 600             |
|                     | 1.8            | Load distance, centre of drive axle to fork         | x                     | mm    | 950 (880)       |
|                     | 1.9            | Wheelbase   | y                     | mm    | 1190 (1120)     |
|                     | Service weight | 2.1   | Service weight        |       | kg              |
| 2.2                 |                | Axle loading, laden front/rear                      |                       | kg    | 480/1140        |
| 2.3                 |                | Axle loading, unladen front/rear                    |                       | kg    | 90/30           |
| Tyres/chassis       | 3.1            | Tyre type   |                       |       | Polyurethane    |
|                     | 3.2.1          | Tyre size, front                                    |                       | mm    | Φ210x70         |
|                     | 3.3.1          | Tyre size, rear                                     |                       | mm    | Φ80x60 (Φ74x88) |
|                     | 3.4            | Additional wheels (castor wheels)                   |                       | mm    | —               |
|                     | 3.5            | Wheels, number front/rear (x=drive wheels)          |                       | mm    | 1x/4 (1x/2)     |
|                     | 3.6.1          | Tread width, front                                  | b10                   | mm    | —               |
|                     | 3.7.1          | Tread width, rear                                   | b11                   | mm    | 410/(535)       |
| Dimensions          | 4.4            | Lift height   | h3                    | mm    | 115             |
|                     | 4.9            | Height of tiller handle in drive position min./max. | h14                   | mm    | 750/1190        |
|                     | 4.15           | Lowered height                                      | h13                   | mm    | 80              |
|                     | 4.19           | Overall length                                      | l1                    | mm    | 1540            |
|                     | 4.20           | Length to face of forks                             | l2                    | mm    | 400             |
|                     | 4.21           | Overall width                                       | b1/b2                 | mm    | 560 (685)       |
|                     | 4.22           | Fork dimensions                                     | s/e/l                 | mm    | 50x150x1150     |
|                     | 4.25           | Distance between fork-arms                          | b5                    | mm    | 560 (685)       |
|                     | 4.32           | Ground clearance, center of wheelbase               | m2                    | mm    | 30              |
|                     | 4.34.1         | Aisle width for pallets 1000×1200 crossways         | Ast                   | mm    | 2145            |
|                     | 4.34.2         | Aisle width for pallets 800×1200 crossways          | Ast                   | mm    | 2050            |
| 4.35                | Turning radius | Wa  | mm                    | 1330  |                 |
| Performance data    | 5.1            | Travel speed, laden/unladen                         |                       | km/ h | 4.5/5.0         |
|                     | 5.2            | Lifting speed, laden/unladen                        |                       | m/s   | 0.017/0.020     |
|                     | 5.3            | Lowering speed, laden/unladen                       |                       | m/s   | 0.09/0.06       |
|                     | 5.8            | Max. gradeability, laden/unladen                    |                       | %     | 6/16            |
|                     | 5.10           | Service brake                                       |                       |       | Electromagnetic |
| Electric-engine     | 6.1            | Drive motor rating S2 60 min                        |                       | kW    | 0.75            |
|                     | 6.2            | Lift motor rating at S3 15%                         |                       | kW    | 0.7             |
|                     | 6.4            | Battery voltage/nominal capacity                    |                       | V/Ah  | 24/20           |
|                     | 6.5            | Battery weight                                      |                       | kg    | 7               |
|                     | Addition data  | 8.1   | Type of drive control |       |                 |
| 10.5                |                | Steering design                                     |                       |       | Mechanical      |
| 10.7                |                | Sound pressure level at the driver's ear            |                       | dB(A) | <74             |

If there are improvements of technical parameters or configurations, no further notice will be given. The diagram shown may contain non-standard configurations.



## Option:

| No.  | Optional items           | EPL1531                      |
|------|--------------------------|------------------------------|
| 1.1  | Fork length              | ●1150/○900/○1000/○1220/○1500 |
| 1.2  | Fork width               | ●560/○685                    |
| 1.3  | Fork lowered height      | ●80                          |
| 2.1  | Load wheel type          | ●Double/○Single              |
| 2.2  | Load wheel material      | ●PU                          |
| 2.3  | Drive wheel material     | ●PU/○Trace PU                |
| 2.7  | Battery capacity         | ●24V/20Ah                    |
| 2.8  | Charger                  | ●24V-10A External            |
| 3.3  | Castor wheels            | ○                            |
| 3.12 | Hummer                   | ●                            |
| 3.16 | Vertical handler working | ●                            |

Note: ●Standard ○ Optional - Inconformity